

Configuration



1. Tool box
 2. Foot Switch
 3. Ground Wire 1.0 m
 4. Ground Plate
 5. Output Cord for $\phi 13\text{mm}$ (for domestic)
Handpiece for $\phi 2 / \phi 3\text{mm}$
 6. Output Cord for $\phi 18\text{mm}$ (for overseas)
Handpiece for $\phi 5\text{mm}$
 7. Silver Tungsten Electrode
 8. Metal Cutter
 9. Electrode Case
 10. Power Cord
- ※Please note that No. 5 or No. 6 is standard equipment as an output cord.

Optional materials

	Wire		Plate		Powder	Porous	Yarn	Hardness after welding HRC
	$\phi 0.2$ 5m (Reeled)	$\phi 0.1$	t 0.2 5mm x 1m	t 0.1	50g	t 0.7 50mm x 80mm	1 bottle	
Plastic mold	NAK-80	●	●	●	●	●	●	40~42
	NAK-55	●	●	●	●	●	●	40~42
	HPM-50	●	●	●	●	●	●	40~42
	HPM-38	●	●	●	●	●	●	52~55
	HPM-2	●	●	●	●	●	●	28~31
	STAVAX	●	●	●	●	●	●	52~55
	RIGOR	●	●	●	●	●	●	52~55
	IMPAX	●	●	●	●	●	●	30~33
	SUS 316L	●	●	●	●	●	●	28~30
	Nickel alloys	●	●	●	●	●	●	15~20
Die cast mold	S50C (5m)	●	●	●	●	●	●	28~32
	SKD-61	●	●	●	●	●	●	40~42
	ORVAR	●	●	●	●	●	●	40~42
Press mold	MAS-1	●	●	●	●	●	●	28~30
	SKD-11	●	●	●	●	●	●	55~57
	SKH-51	●	●	●	●	●	●	60~62
Others	SVERKER	●	●	●	●	●	●	55~57
	For nitriding	●	●	●	●	●	●	18~20
	Supper alloys	●	●	●	●	●	●	-----

Broad Application Range

- Plastic mold
- Die-cast mold
- Press mold
- Glass mold
- Blow mold
- Rubber mold

Option

Electrode	<ul style="list-style-type: none"> Silver $\phi 2 \times 50\text{mm}$ (round) Tungsten $\phi 3 \times 50\text{mm}$ (round) $\phi 5 \times 50\text{mm}$ (round) $1.5 \times 5 \times 50\text{mm}$ (flat) $\phi 2 \times 50\text{mm}$ Magnet type (round) $\phi 3 \times 50\text{mm}$ Magnet type (round) $\phi 5 \times 50\text{mm}$ Magnet type (round)
Handpiece	<ul style="list-style-type: none"> $\phi 13 \times 130\text{mm}$ For $\phi 2$ electrode $\phi 13 \times 130\text{mm}$ For $\phi 3$ electrode $\phi 18 \times 150\text{mm}$ ※Electrode holder required $\phi 18$ Electrode holder for handpiece FOR $\phi 2/\phi 3/\phi 5$

※Please select a hand piece in accordance with the size of the resistant torch cord.

Specifications

Method	Condenser Electrical Discharge
Input	Single Phase 230V 50/60Hz
Power consumption	630VA
Output	3000A MAX
Tact Time	0.27sec. MIN
Control	CPU Controlled
Others	Single/Continuous electricity switching function
Dimensions	180(W) x 240(H) x 390(D)
Weight	Approx 17kg

▲ Safety Remarks The operation, maintenance, and inspection of this product must only be conducted by a specialist thoroughly familiar with the product.

●The design and specifications are subject to change without prior notice for product improvement.

Capacitive-discharge
Resistance welding machine

Adjustment of mold shim
and temporary treatment!
Quick operation
with simplified welding!

- Height adjustment with shim plate
- Adjustment of R-shaped face
- Temporary treatment of face with burr
- Adjustment of nest backlash



Manufacturer And Seller **SANWA SHOKO CO.,LTD.**
 2-21-4 Hatagaya, Shibuya-ku, Tokyo, 151-0072, Japan
 TEL : 81-3-3376-3464 FAX : 81-3-3374-0346
 E-mail sanwa.shoko@nifty.com
 URL http://www.sanwashoko.co.jp

Agent

QUICK WELDER SW-808

Capacitive-discharge Resistance welding machine

A wide variety of welding materials selectable according to the application

Press punching mol

Height adjustment with shim plate

Fixing a shim plate securely prevents mold shift!

Press drawing mold

Adjustment of R-shaped face

This model is best suited for fine adjustment with a shim plate at making a master model!
This model is attachable according to R-shaped faces!

Resin/plastic mold

Temporary treatment of face with burr

Best suited for revision at place that is not weldable!

Nesting parts

Adjustment of nest backlash

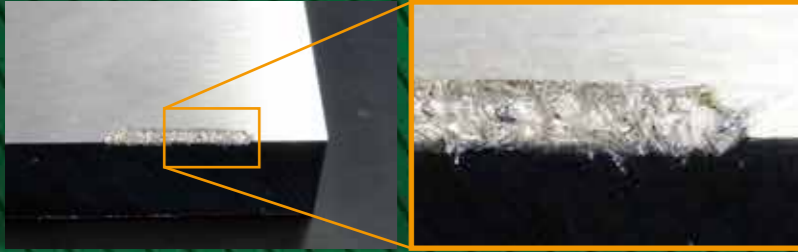
Best suited to fixing shim plate attached to side face!



Welding material **Shim plate**
Supported range **Up to 0.5 mm in thickness**
Application **For adjustment of bottom face, side face, and R-shaped drawing of nest**



Welding material **Welding wire**
Supported range **0.1 to 0.4 mm in diameter**
Application **For burr avoiding or selecting material suitable for steel material**



Welding material **Porous material**
Supported range **0.7 mm in thickness**
Application **For burr avoiding or welding by fixing the height and shape of the welding material**



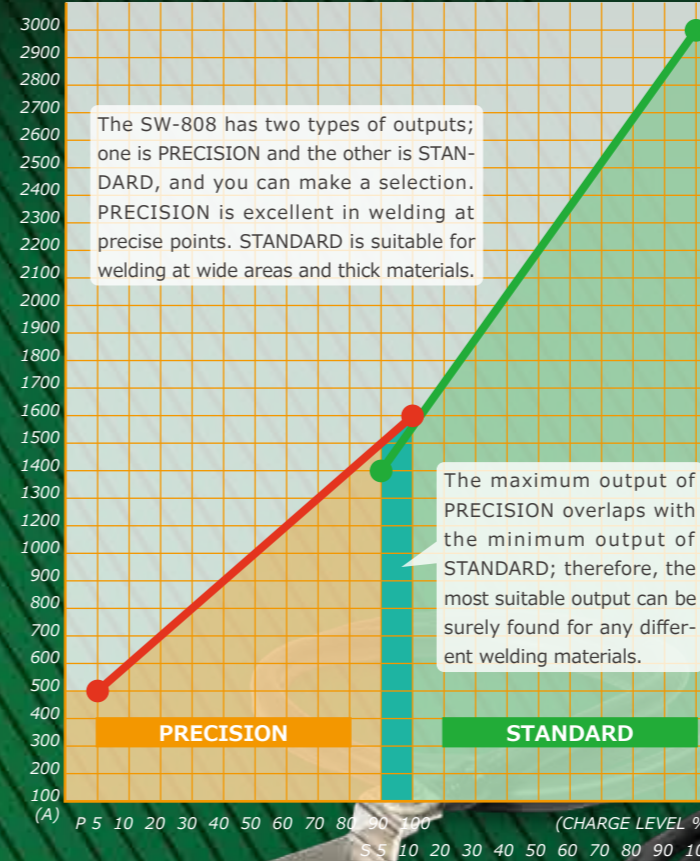
Welding material **Yarn**
Supported range **20 to 100µm in fiber diameter**
Application **For repair of scratch or pinhole
Making twisting it according to shape and weldable**



Welding material **Powder**
Supported range **145 µm or less in particle diameter**
Application **For repair of pinhole
Use after making it into paste form by kneading it with oil**

This product is a capacitive-discharge type welding machine usable with a wide range of welding materials. This model is compact and portable but capable of repairing molds at anywhere because a high power circuit is embedded in it. In addition, it has a highly visible operation panel that allows users to understand the operation status at a glance.

Output graph



Comparison between SW-808 and SW-V02

	SW-808	SW-V02	
Pinhole in mirror-finished face of product	◎	△	At the place where even the laser heat is not permitted
Strength-required PL or hard-facing repair at three apexes	△	◎	Melting is required to increase in strength
Burr avoiding repair in a short time	◎	○	Almost zero machine preparation required
Time required for shim plate attachment	◎	○	Easy handling because of small machine
Matching of material and color at repair point	△	◎	No melting is required and, accordingly, the actual material and color of repair welding material shown
Power supply	100/200V (selectable)	200V	Easy securing of power supply
Argon gas (shielding gas)	Not required	Required	Mold repair available even at the place where gas cannot be brought
Welding method	Resistance	Resistance and TIG	No license required for handling the machine, and no special protective equipment required
Price (suggested retail price base)	Less than half price of SW-V02		Introducible at low cost